

SURVEY RESEARCH CENTER AT IUPUI

Gaming and Betting by Adults, Age 21-59, in Indiana – 2005

Summary of Methods and Findings

October, 2005

Submitted by
Survey Research Center
Indiana University - Purdue University, Indianapolis

PROJECT STAFF

James Wolf, Director
jamwolf@iupui.edu
317-278-9230

S. Andrew Hutcherson, Associate Director
sahutche@iupui.edu
317-274-4105

Brianne Peyton, Field Coordinator
bgobrien@iupui.edu
317-274-4104

Charles Hulen, Technical Coordinator
chulen@iupui.edu
317-274-4185

Angela Rodak, Research Associate
andsprin@iupui.edu
317-274-4180

Survey Research Center at IUPUI
Walker Plaza Building
719 Indiana Avenue - Suite 260
Indianapolis, IN 46202

Fax: 317-278-2383
<http://src.iupui.edu>

The Survey Research Center at IUPUI, a unit of the Indiana University School of Liberal Arts, is an interdisciplinary survey research center that provides services to a wide variety of private, non-profit and governmental organizations. The SRC also serves the entire IUPUI campus by conducting research for faculty members, students and various university departments.

This report was prepared by Angie Rodak and Jim Wolf.

Table of Contents

PROJECT STAFF	II
TABLE OF CONTENTS	III
EXECUTIVE SUMMARY	1
INTRODUCTION	3
SURVEY METHODOLOGY	3
TABLE 1: FINAL OUTCOMES FOR EACH NUMBER ATTEMPTED	5
TABLE 2. PERCENT OF INDIANA ADULTS (AGE 21-59) WHO GAMBLE FOR MONEY	9
FIGURE 2. MOST COMMON TYPES OF GAMBLING, AGE 21-59	10
TABLE 3. PERCENT OF ADULTS (AGE 21-59) WHO PLAY THE LOTTERY	12
TABLE 4. PERCENT OF ADULTS (AGE 21-59) WHO PLAY PULL-TABS	13
TABLE 5. PERCENT OF ADULTS (AGE 21-59) WHO PLAY CARDS FOR MONEY	14
TABLE 6. PERCENT OF ADULTS (AGE 21-59) WHO BET AT CASINOS	16
TABLE 7. PERCENT OF ADULTS (AGE 21-59) WHO PLAY BINGO.....	17
TABLE 8 . PERCENT OF ADULTS (AGE 21-59) WHO BET ON HORSES.....	18
TABLE 9. PERCENT OF ADULTS (AGE 21-59) WHO BET ON SPORTS EVENTS.....	19
TABLE 10. PERCENT OF ADULTS (AGE 21-59) WHO BET ON GAMES OF PERSONAL SKILL.....	20
TABLE 11. PERCENT OF ADULTS (AGE 21-59) WHO PLAY DICE FOR MONEY	21
TABLE 12. PERCENT OF ADULTS (AGE 21-59) WHO BET ON THE INTERNET	22
FIGURE 3. MEDIAN LARGEST AMOUNTS EVER WON OR LOST BY ADULTS (AGE21-59) WHO HAVE BET IN THE PAST YEAR.....	23
APPENDIX A: THE QUESTIONNAIRE	25
APPENDIX B: DMHA ADMINISTRATIVE REGIONS	40
APPENDIX C: FREQUENCY TABLES AND MEANS	41

Executive Summary

The FSSA Division of Mental Health and Addiction sponsored a survey of people in Indiana age 21-59 years old to determine the extent of gaming and betting for money. In July 2005 the Survey Research Center at IUPUI conducted the survey and compiled this report. A random sample of people throughout Indiana age 21-59 was contacted by telephone. This resulted in a total of 751 interviews with a response rate of 33.1 percent.

Almost 90 percent of Indiana adults age 21-59 have engaged in some sort of gaming or betting for money at some point in their lives. However, only 42 percent of this age group has gambled in the past month. Close to half of the men in this age group report gambling in the past month whereas only about a third of women this age have gambled in the same time period. Past month gambling increases with age from about 40 percent of those in their early 20's to about half of those in their late 50's.

For the most part, trends in reported lifetime, past year and past month gambling all reflect essentially the same rank order of gambling modalities. Lottery tickets are, by far, the most popular form of gaming among this age group. Roughly two-thirds have purchased lottery tickets at some point in their lives and about a third have purchased them within the past month. Another type of gaming similar to the lottery ranks second. Pull-tabs have been played by over 60 percent of those age 21-59 in their lifetimes and about 20 percent report playing them in the past month. At some point in their lives, roughly 40 percent of people in this age group have played cards for money or bet at a casino. But only five percent or less report participating in this type of gaming in the past month.

If respondents reported that they had participated in a particular form of gaming or betting in the past 12 months they were asked to report the largest amount they had ever won and lost (or spent) at this activity. The largest median amounts ever won were associated with casinos gambling and playing dice. The largest losses were associated with these same forms of gambling.

Respondents who reported ever engaging in a particular type of gambling were also asked at what age they first played this game for money. The average earliest age (about 20) at which respondents reported gaming for money referred to playing cards or games of personal skill (such as bowling or pool) for money. The games that are currently most popular with this age group (lottery and pull-tabs) are games that the average person 21-59 years old did not start until after they were almost 30 years old.

Modified questions were asked using the DSM-IV criteria for substance use to determine if gambling has had a negative impact on those who have gambled at all in the past year. So few respondents responded positively to any of the symptoms it was determined that this approach was not an effective measure of problem gambling.

Introduction

The Indiana FSSA Department of Mental Health and Addiction (DMHA) commissioned the Survey Research Center at IUPUI (SRC) to conduct a telephone survey of Indiana residents ages 21-59. The purpose of the survey was to ascertain the extent of gambling among Indiana adult residents. The questionnaire was developed by DMHA with assistance from the SRC. A copy of the final questionnaire used in the survey can be found in Appendix A: The Questionnaire.

Survey Methodology

The interviews were conducted by professional interviewers at the SRC from our special facilities in Walker Plaza on the Indiana University-Purdue University Indianapolis campus. All interviewers received at least nine hours of general interviewer training, in addition to the more than one hour of specific training on the youth gaming questionnaire. Most of the interviewers were “veteran” interviewers in the sense that they had participated in similar research projects previously. Some have been interviewers for the Survey Research Center for over five years.

The maximum margin of error for the survey does not exceed 3.4% at a 95% confidence interval. Of course, additional error may result from things such as question wording, respondents’ inattention, pace of speech by the interviewer, and respondents’ willingness to honestly answer individual items. Each of these is given special attention during the questionnaire design and data collection phases so total survey error is minimized as much as possible. We have no reason to believe there are major biases in the data collected for this research.

The interviews for the survey were conducted between June 27, 2005 and July 5, 2005. Calls were made between the hours of 10 a.m. and 9:30 p.m. Each interviewer was given a set of answers entitled “What the Respondent Might Like to Know” which were to

provide standard responses to questions raised by the people contacted for an interview. The sample of telephone numbers was obtained from Survey Sampling, Incorporated. In addition all calls were monitored and 10% of all completed interviews were verified by supervisors. All “non-contacts” such as answering machines or no answers were reattempted at least 10 times.

Each interview began with the interviewer dialing a telephone number distributed by the CATI system. The person answering the phone at each residence is referred to as the informant. When the informant answered the telephone the interviewer read the introduction explaining the purpose of the study to the informant. The interviewer then asked the informant whether there were any household members older than 20 and younger than 60. If the informant indicated that there were eligible respondents at that telephone number the interviewer asked the informant to provide the number of those of that age currently living in the household. If there was more than one eligible respondent, the respondent with the most recent birthday was selected to do the interview.

The interviewer then asked to speak to the eligible respondent. A callback was scheduled if the selected respondent was not at home. Response rates were calculated using the formulas suggested by the American Association for Public Opinion Research (On the web: <http://www.aapor.org>). A total of 3491 phone numbers were called resulting in 751 completed interviews. The final outcome of each number attempted can be categorized into the following dispositions shown in Table 1:

Table 1: Final Outcomes for Each Number Attempted

	Indiana Adults 60+
Complete	751
Partial	4
Eligible but no interview completed:	
Refusal	1181
Break off	2
Respondent never available	97
Deceased respondent	0
Physically or mentally unable/incompetent	8
Language	40
Unknown eligibility:	
Always busy	12
No answer	25
Telephone answering device	216
Telecommunications tech barriers	0
Not eligible:	
No eligible respondents	455
Fax/Data line	21
Non-working number	46
Disconnected number	296
Number changed	30
Cell phone	16
Call forwarding	0
Business, government office, other organizations	50
Group quarter	10
Total phone numbers used	3491

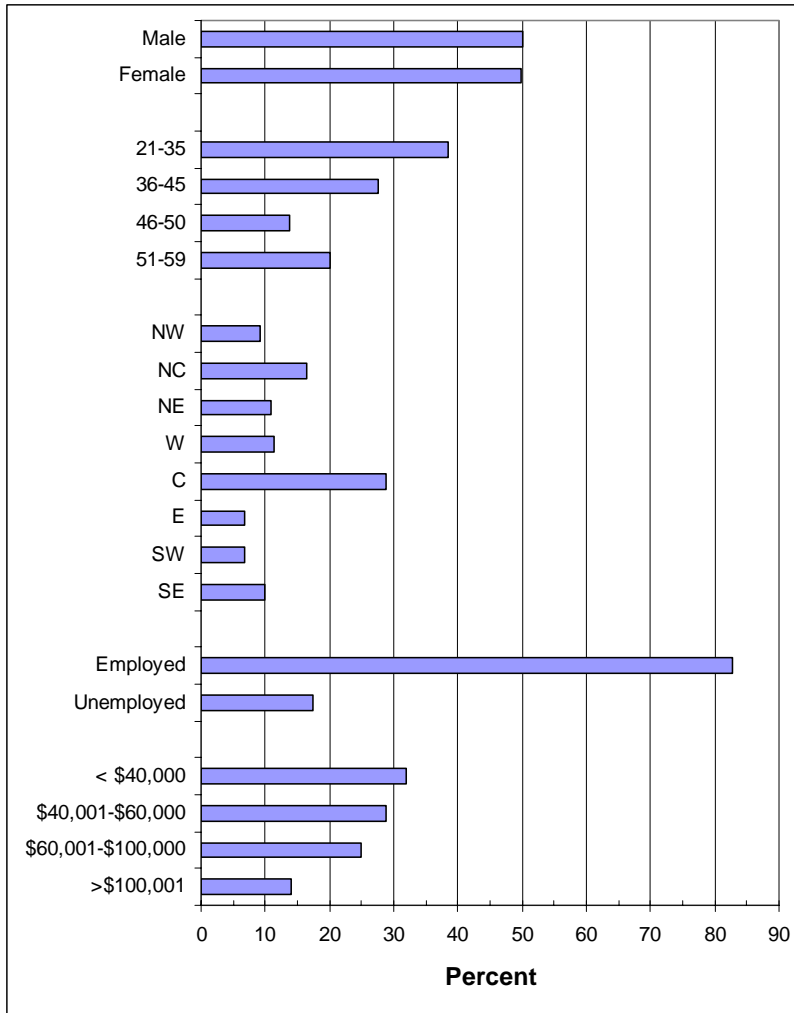
Following the American Association for Public Opinion Research’s Standard Definitions¹ and using an estimate of the proportion of cases of unknown eligibility that were actually eligible, the survey achieved a response rate of 31.1 percent.

¹ American Association for Public Research. 2004. *Standard Definitions: Final Dispositions of Case Codes and Outcome Rates for Surveys. 3rd edition*. Lenexa, Kansas: AAPOR.
http://www.aapor.org/pdfs/standarddefs_ver3.pdf.

Findings

The sample used for this study was comprised of random telephone numbers of households throughout Indiana. The respondents that resulted from this approach were found to be representative of the population of Indiana, age 21-59 years old, based on recent Census findings for Indiana. One of the goals of this study was to examine the gaming and betting habits of Hoosiers, age 21-59, based on several important demographic characteristics. These characteristics, shown in Figure 1, will be used throughout this report in examining the prevalence of gambling in Indiana among adults age 21-59 years old.

Figure 1. Demographic Characteristics of the Sample (N=751)



There were a total of 751 respondents for this study. The demographic categories reflect the known characteristics of this population in Indiana. The most populated areas are the Central region and the least are the Southwest and Eastern regions.² Almost forty percent of this population is between the age of 21 and 35, followed by nearly thirty percent being between 36 and 45 years old. Over eighty percent of adults age 21-59 in Indiana are currently employed and the largest income group (32%) reports incomes less than \$40,000.

² The geographic regions used in this report are the FSSA Administrative Regions defined by DMHA. See **Appendix B** for a map of these regions.

Prevalence of Any Type of Gambling

Almost ninety percent of Indiana adults between the ages of 21 and 59 have engaged in some kind of gambling for money in their lifetime. In the past year, over sixty-five percent of this age group has gambled for money, and in the past month, much less than half (42.3%) reported some sort of gaming or betting. Our respondents reported having tried, on average, about three different types of gambling in their lifetime.

Males are more likely to gamble for money than females. Over ninety percent of men reported participating in gambling in their lifetime, and almost half of our male respondents reported having gambled in the past month (47.8%). Nearly eighty-five percent of women had gambled in their lifetime and over a third of women had gambled in the past month (36.8%). The largest difference between male and female gambling participation was found when asked if they had gambled in the past year. Nearly fifteen percent more males (74.2%) reported gambling than women (60.3%) in the past year. Men also conveyed that they have tried more types of gambling for money than have women between the ages of 21 and 59.

Table 2. Percent of Indiana Adults (age 21-59) Who Gamble for Money

(N=751, 2005)

	Lifetime	Past year	Past month	# Types*
Indiana	88.2%	67.3%	42.3%	3.4%
Gender				
Male	91.8	74.2	47.8	4.0
Female	84.6	60.3	36.8	2.9
Age				
21-35	86.7	67.4	38.9	3.2
36-45	91.3	68.4	41.3	3.5
46-50	84.4	65.3	41.4	3.2
51-59	89.2	67.0	50.9	3.6
Region				
NW	84.3	50.6	34.6	3.1
NC	85.9	67.0	43.8	3.2
NE	86.7	72.7	40.2	3.4
W	90.2	63.5	45.6	3.2
C	89.3	70.5	42.9	3.6
E	93.3	70.4	45.5	3.7
SW	87.1	66.9	35.2	3.7
SE	88.9	70.3	46.7	3.3
Employed	88.7	67.7	42.4	3.5
Unemployed	85.6	65.4	42.0	2.8

All age groups included in this survey reported having tried, on average, three different types of gaming or betting for money in their lifetimes. The 36-45 age group reported the highest percentage of respondents who had ever gambled in their lifetime, over ninety percent; however, the other age groups were fairly closely related in the mid to high eighty percent range. The same holds true with the percentage of respondents who have gambled in the past year. The 36-45 age group is highest, but not considerably, with all ages ranging in the mid to high sixty percent range. It is interesting to note that the amount of betting in the past month increases with age. Half of the 51-59 age group reported having gambled in the past month, while 38.9 percent of the 21–35 age group had gambled in that same time period. Just over forty percent of those between their mid-thirties and fifty years of age reported having gambled in the past month.

The geographic region in which the respondent resides does not seem to show any noteworthy differences in overall gambling habits. The Northwest region of Indiana reported the lowest percentage of current gamblers with 34.6 percent participation. The Southwest region also reported a little over a third (35.2%) of their population gambling in the past month as well. The remaining regions reported participation in gambling between forty and forty-five percent. In the past year, the percentage of the population who gambled for money ranged from fifty percent in the Northwest region to seventy percent in the Southeastern region of the state.

Although participants who were employed reported a slightly higher percentage of gambling in their lifetime, and in the past year, it is interesting to note that employment, or lack there of, made no difference in the amount of current gamblers. Over forty percent of both groups of respondents that were employed and unemployed reported having gambled for money in the past month.

Figure 2. Most Common Types of Gambling, Age 21-59

(N=751, 2005)

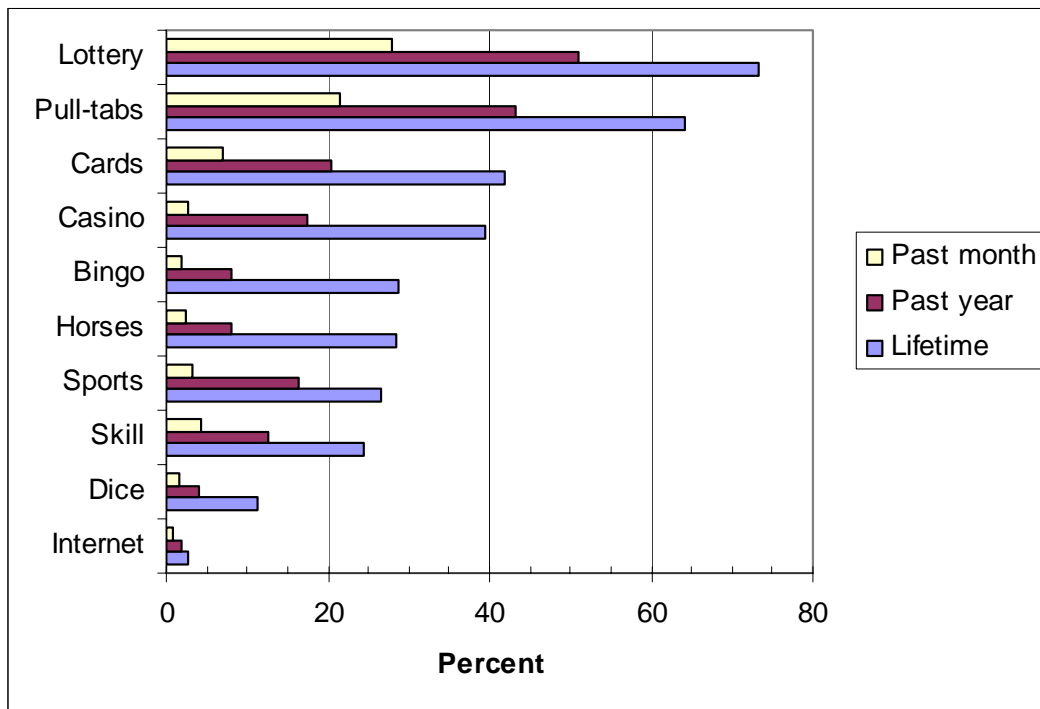


Figure 2 displays the relative frequency with which adults between the ages of 21-59 participate in gambling for money in their lifetime, in the past year, and in the past month. These activities are arranged in decreasing order of lifetime prevalence. The two most common types of gambling for money reported by adults between the ages of 21-59 in Indiana are playing the lottery and pull-tabs or scratch-off tickets. More than sixty percent of adults in this age range have reported playing these games in their lifetime, and more than half have played the lottery in the past year. Around forty percent of the participants ages 21-59 have reported playing cards for money (41.9%) and placing bets at casinos (39.4%) in their lifetime. Playing bingo for money, betting on horses, college or professional sports, or on games of personal skill have all been reported by at least twenty percent of the adults in this age group. The remaining two types of gambling reported by adults age 21-59 in Indiana are playing dice for money and betting on the internet. The remainder of this report will look at each of these types of gambling separately by gender, age, geographic region of Indiana, and by employment status.

Table 3. Percent of Adults (age 21-59) Who Play the Lottery

(N=751, 2005)

	Lifetime	Past year	Past month
Indiana	73.2%	50.9%	27.9%
Gender			
Male	77.4	54.5	30.9
Female	68.9	47.2	24.9
Age:			
21-35	69.0	46.7	18.8
36-45	74.8	50.7	26.7
46-50	76.0	56.7	36.5
51-59	77.5	55.3	40.8
Region:			
NW	66.7	36.2	20.3
NC	72.4	53.7	27.4
NE	72.0	56.6	31.3
W	79.1	46.5	31.8
C	72.6	49.8	25.6
E	68.6	51.0	26.0
SW	82.4	58.8	25.5
SE	72.6	55.6	37.0
Employed	74.2	51.5	28.5
Unemployed	68.5	48.1	25.4

Prevalence of Playing the Lottery

Playing the lottery is the most prevalent type of gaming among adults ages 21-59 in Indiana. Almost three-fourths of adults in this age group have purchased lottery tickets in their lifetime and half of this group has done so in the past year. Women are less likely to buy lottery tickets than men; however, there is less than a ten percent difference in their lifetime, in the past year, and in the past month. The lottery is increasingly popular as age increases, according to our respondents. The percentage of adults 21-59 that had purchased lottery tickets in the past month more than doubled between the youngest age group (21-35; 18.8%) and the eldest (51-59; 40.8%) in this survey. While the

Northwestern region is consistently lower in participation, the popularity of the lottery is fairly consistent throughout the state with more than two-thirds of all regions having had played in their lifetime. Adults who are employed were somewhat more likely to have played the lottery than those that are unemployed.

Table 4. Percent of Adults (age 21-59) Who Play Pull-Tabs

(N=751, 2005)

	Lifetime	Past year	Past month
Indiana	64.2%	43.1%	21.5%
Gender			
Male	63.8	43.1	20.5
Female	64.5	43.2	22.5
Age:			
21-35	67.4	47.4	22.6
36-45	63.8	39.8	18.4
46-50	59.6	40.4	26.7
51-59	61.6	41.4	20.5
Region:			
NW	55.1	34.8	21.7
NC	65.0	39.8	19.4
NE	70.7	54.2	26.8
W	68.2	43.0	20.9
C	60.6	42.1	20.8
E	74.0	48.0	32.0
SW	68.6	41.2	17.6
SE	60.8	44.6	17.8
Employed	65.2	43.4	20.9
Unemployed	59.2	41.5	24.6

Prevalence of Betting on Pull-Tabs and Scratch-Offs

Playing pull-tabs and scratch-offs are the second most popular form of gaming for adults ages 21-59 in Indiana. Almost two-thirds of respondents reported having played in their lifetime, and over twenty percent have participated in this form of betting in the past month. Both women and men report similar interest, with 20.5 percent of men and 22.5

percent of women betting in the past month. Age does not appear to be a factor in the popularity of this type of gambling with comparable interest appearing in all age groups. The Eastern and Northeastern regions of the state consistently report higher percentages of participation in their lifetime, in the past year, and in the past month, although it is also popular in the rest of the state. This type of gambling is somewhat more frequent among the employed.

Table 5. Percent of Adults (age 21-59) Who Play Cards for Money

(N=751, 2005)

	Lifetime	Past year	Past month
Indiana	41.9%	20.3%	7.0%
Gender			
Male	56.6	28.7	11.4
Female	27.0	11.8	2.7
Age:			
21-35	42.4	25.3	7.6
36-45	42.0	16.9	6.3
46-50	40.0	21.2	6.7
51-59	42.1	15.1	6.6
Region:			
NW	33.3	15.9	4.3
NC	36.1	12.3	5.7
NE	47.6	20.7	3.6
W	34.1	18.6	5.9
C	49.5	27.3	12.5
E	46.0	23.5	7.8
SW	42.0	13.7	2.0
SE	36.5	21.6	2.7
Employed	44.0	22.4	8.2
Unemployed	32.3	10.8	1.5

Prevalence of Playing Cards for Money

Playing cards for money does not appear to be nearly as popular as the two previous forms of gambling. Although, over forty percent of adults ages 21-59 have participated in this type of gaming in their lifetime, only 20.3 percent have done so in the past year, and less than ten percent have played in the past month. Playing cards is much more popular among men than women. In their lifetime and in the past year, men are more than twice as likely (56.6%, 28.7%) to have played cards for money as woman (27.0%, 11.8%). Age does not appear to be related to overall gambling at cards. Betting on card games is most popular in the Central region of the state, particularly in the past month, compared to the other regions. This type of betting is consistently more popular among the employed than the unemployed.

Prevalence of Betting at Casinos

Gambling at casinos is the fourth most popular form of gaming reported by adults ages 21-59 in Indiana. Almost forty percent of this age group has gambled at a casino in their lifetime, however, only 17.5 percent have done this type of gambling in the past year and 2.7 percent in the past month. In their lifetime and in the past year, men report higher percentages of participation in casino gambling than do women, however, participation was almost the same between genders in the past month. Age does not seem to be a factor in gambling at casinos, however, the percentage of participants, in general, is slightly higher among those in their fifties. Regionally, there are no clear patterns of reported casino gambling. Almost half of those living in Central Indiana report gambling at a casino at some point in their lives, but recent visits to casinos are more often reported by those in the Northern regions. In general, the employed are more likely to gamble at casinos than the unemployed.

Table 6. Percent of Adults (age 21-59) Who Bet at Casinos

(N=751, 2005)

	Lifetime	Past year	Past month
Indiana	39.4%	17.5%	2.7%
Gender			
Male	43.9	22.1	2.7
Female	34.9	12.8	2.9
Age:			
21-35	38.7	18.5	2.4
36-45	41.5	16.9	1.4
46-50	33.3	12.5	3.8
51-59	42.1	19.1	4.6
Region:			
NW	33.8	17.6	4.4
NC	37.4	16.1	4.8
NE	34.1	15.9	0.0
W	36.0	16.5	1.2
C	48.1	19.9	2.3
E	30.0	13.7	4.0
SW	37.3	15.7	3.9
SE	39.2	20.3	2.7
Employed	41.8	18.5	2.3
Unemployed	27.9	12.3	4.6

Prevalence of Playing Bingo

Playing bingo does not appear to be a popular type of gambling among adults in this age group. Table 7 illustrates how just over a quarter (28.8%) of respondents reported playing bingo in their lifetime, and very few people (1.9%) had played in the past year. Women were more likely to have played bingo than men. In the past year, 12.3 percent of women and 3.7 percent of men have participated in this activity. Contrary to the assumed perception that bingo is popular among the elderly, age had no considerable bearing on the percentage that reported participation. These results coincide with the previous report analyzing results of senior citizens in Indiana. Playing bingo is particularly popular in the Eastern region of the state, which reported the highest percentage of involvement in their

lifetime, in the past year, and in the past month over all other regions in the state. Employment status had no relation to adults who play bingo.

Table 7. Percent of Adults (age 21-59) Who Play Bingo

(N=751, 2005)

	Lifetime	Past year	Past month
Indiana	28.8%	8.0%	1.9%
Gender			
Male	23.2	3.7	1.3
Female	34.5	12.3	2.7
Age:			
21-35	24.8	8.0	0.3
36-45	33.3	8.7	3.9
46-50	25.2	8.7	2.9
51-59	32.5	6.6	1.3
Region:			
NW	32.4	7.4	1.5
NC	28.5	10.6	0.8
NE	27.7	3.6	1.2
W	27.1	8.2	2.4
C	23.3	7.0	1.4
E	43.1	14.0	7.8
SW	33.3	11.8	2.0
SE	32.4	5.4	1.4
Employed	29.2	7.3	1.8
Unemployed	26.4	11.6	3.1

Table 8 . Percent of Adults (age 21-59) Who Bet on Horses

(N=751, 2005)

	Lifetime	Past year	Past month
Indiana	28.4%	8.1%	2.4%
Gender			
Male	32.7	10.1	3.2
Female	24.0	6.1	1.6
Age:			
21-35	19.8	8.0	2.4
36-45	30.0	7.2	2.4
46-50	32.7	7.7	1.0
51-59	39.5	8.6	2.6
Region:			
NW	24.3	7.2	1.4
NC	24.2	5.6	1.6
NE	18.1	6.0	0.0
W	21.2	4.7	0.0
C	32.4	8.3	4.2
E	39.2	16.0	4.0
SW	41.2	13.7	3.9
SE	32.4	10.8	1.4
Employed	30.1	8.5	2.9
Unemployed	20.2	6.2	0.0

Prevalence of Betting on Horses

Similar to the prevalence of playing bingo, just over a quarter (28.4%) of respondents reported betting on horses in their lifetime, and less than ten percent had played in the past year. It is slightly more popular among men than women and does not seem to be related to age. Betting on horse races is much more popular in the Southwestern and Eastern regions as they have reported the highest percentage of participation overall. The lowest percentage of betting on horse racing is in the Western and Northeastern regions of the state, which reported no betting on horse racing whatsoever in the past month. This type of gaming is most popular, overall, with the employed, rather than the unemployed.

Table 9. Percent of Adults (age 21-59) Who Bet on Sports Events

(N=751, 2005)

	Lifetime	Past year	Past month
Indiana	26.6%	16.4%	3.1%
Gender			
Male	37.8	23.9	3.5
Female	15.5	8.8	2.7
Age:			
21-35	24.0	16.7	4.2
36-45	29.0	15.5	1.9
46-50	21.9	17.1	3.8
51-59	32.2	16.4	2.0
Region:			
NW	26.1	18.6	5.8
NC	26.6	14.6	1.6
NE	26.5	13.3	3.6
W	22.4	14.1	3.5
C	29.2	18.1	3.7
E	28.0	18.0	4.0
SW	27.5	14.0	0.0
SE	23.0	17.6	1.4
Employed	28.3	17.5	2.9
Unemployed	19.2	10.8	3.8

Prevalence of Betting on Sporting Events

Betting on the outcome of college or professional sporting events is also a form of gaming that just over a quarter (26.6%) of Hoosier adults ages 21-59 have tried in their lifetime. The percentage of this form of betting was double that of betting on bingo or horse racing in the past year with 16.4 percent of this age group gambling on sporting events. Generally and probably as expected, men were more than twice as likely to bet on sports as women in their lifetime, and almost three times more likely in the past year. Age, again, did not appear to be related to betting on sporting events. Interestingly, the Northwestern region of the state had the highest percentage of respondents betting in the

past year (18.6%) and in the past month (5.8%) than any other region. This area usually has one of the lowest percentages overall for gambling when compared to the other regions. Current betting on sporting events does appear to be slightly more popular among the unemployed.

Table 10. Percent of Adults (age 21-59) Who Bet on Games of Personal Skill

(N=751, 2005)

	Lifetime	Past year	Past month
Indiana	24.3%	12.7%	4.4%
Gender			
Male	40.3	20.8	7.5
Female	8.3	4.5	1.3
Age:			
21-35	24.7	17.0	6.3
36-45	25.7	12.6	4.4
46-50	21.2	13.5	3.8
51-59	23.7	4.6	1.3
Region:			
NW	21.7	15.9	10.1
NC	21.0	11.3	5.7
NE	29.3	16.9	3.6
W	22.4	9.4	0.0
C	28.7	18.1	6.0
E	22.0	7.8	4.0
SW	23.5	2.0	0.0
SE	18.9	8.1	1.4
Employed	26.0	13.5	4.4
Unemployed	16.2	9.2	3.9

Prevalence of Gambling on Games of Personal Skill

Less than one-fourth (24.3%) of Hoosiers in this age group have ever betted on games of personal skill, like bowling, pool, or darts. As probably expected, men are much more likely to have gambled on personal skill. In their lifetime, 40.3 percent of men and 8.3

percent of women reported this type of gaming. In the past year and in the past month, betting on personal skill was most popular among the youngest age group and the percentage decreased as age increased in the past month. This type of activity appears to be most popular in the Central and Northeastern regions of the state. Betting on personal skill is most likely among those that are employed rather than those that are unemployed.

Table 11. Percent of Adults (age 21-59) Who Play Dice for Money

(N=751, 2005)

	Lifetime	Past year	Past month
Indiana	11.3%	4.0%	1.6%
Gender			
Male	15.6	5.9	2.2
Female	6.9	1.9	1.1
Age:			
21-35	10.2	4.2	2.8
36-45	11.6	4.8	1.4
46-50	8.7	2.9	0.0
51-59	14.6	2.6	0.7
Region:			
NW	13.4	6.0	4.5
NC	9.7	1.6	0.0
NE	11.0	3.6	0.0
W	10.8	3.7	1.2
C	12.0	5.1	1.9
E	17.6	10.0	7.8
SW	7.8	0.0	0.0
SE	8.2	1.4	0.0
Employed	11.3	4.2	1.3
Unemployed	10.8	3.1	3.1

Prevalence of Playing Dice for Money

Playing dice for money is one of the least reported types of gambling in the state of Indiana. Just over ten percent of adults in this age range have played dice in their lifetime

and only 1.6 percent in the past month. Men are more likely to play dice than women and age only seems to be a factor in the past year and month with participation decreasing as age increases. Playing dice for money is consistently most popular in the Eastern region of the state in their lifetime, in the past year, and in the past month. Employment status does not appear to be a factor in playing dice for money.

Table 12. Percent of Adults (age 21-59) Who Bet on the Internet

(N=751, 2005)

	Lifetime	Past year	Past month
Indiana	2.8%	1.9%	0.9%
Gender			
Male	5.3	3.7	1.6
Female	0.3	0.3	0.0
Age:			
21-35	3.1	2.1	1.0
36-45	1.9	1.9	1.0
46-50	5.8	3.8	1.0
51-59	1.3	0.7	0.0
Region:			
NW	0.0	0.0	0.0
NC	0.0	0.0	0.0
NE	4.9	3.6	1.2
W	3.5	3.5	1.2
C	2.8	1.9	1.4
E	7.8	4.0	2.0
SW	2.0	2.0	0.0
SE	4.1	1.4	0.0
Employed	3.1	2.4	1.0
Unemployed	0.8	0.0	0.0

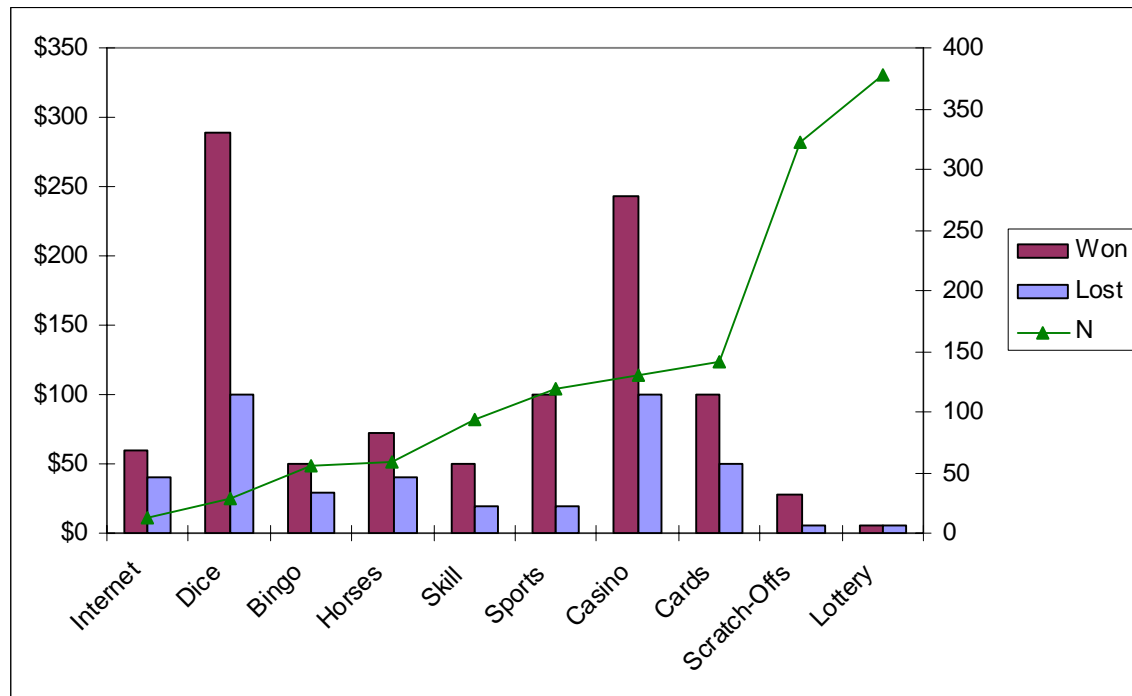
Prevalence of Betting Money on the Internet

Betting money on the internet is the least reported type of gambling reported by adults in this age range. Less than three percent of Hoosiers have ever tried this type of gambling

and almost no one participated in the past month. Internet betting is almost exclusively done by males and age does not appear to be a factor at this point. This is most popular in the Eastern region of Indiana and used almost entirely by the employed.

Figure 3. Median Largest Amounts Ever Won or Lost by Adults (age21-59) Who Have Bet in the Past Year

(Averages by Types of Gambling, 2005)

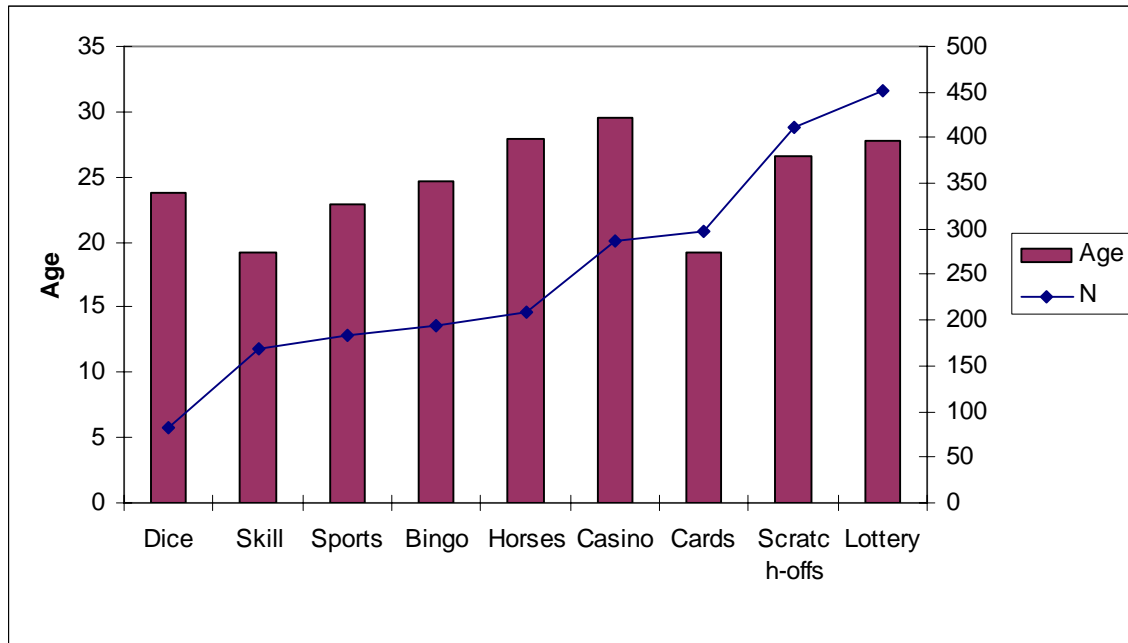


Largest Amounts Won or Lost

If respondents reported that they had participated in a particular form of gaming or betting in the past twelve months, they were asked to answer two follow-up questions: “What was the largest amount you ever won in one day?” and “What was the largest amount you ever lost or spent in one day?” Figure 3 displays the median amounts reported by those who had played any of these games in the previous year. The median dollars won and lost are shown as bars calibrated to the left axis. The line, calibrated to the right axis, indicates the number of people in the sample who reported having participated in each activity in the past year. The largest median reported winnings were

associated with playing dice for money and gambling at casinos. The games played by the most people, lottery and scratch-offs, had the lowest median reported winnings.

Figure 4. Average Age First Played Each Type of Game



Average Age First Gambled for Money

People who reported ever engaging in a particular type of gambling were also asked at what age they first played this game for money. The bars in Figure 4 show the average age at which people reported first playing that type of game. The line shows the number of respondents reporting they had played this game. The two forms of gambling that people began at the youngest age, around nineteen years old, were games of skill and card playing. Gambling at casinos is the activity that is first started the latest in life, at almost thirty years of age. The average age most people begin participating in the two most popular types of gambling, lottery and scratch-offs, is around twenty-seven.

Appendix A: The Questionnaire

Gaming Survey for 21 to 59 Year-Olds
FINAL DRAFT – June 20, 2005

Hello, my name is (INSERT NAME), and I am calling from the Indiana University Public Opinion Laboratory. We are calling today to discuss some important issues regarding older adults in Indiana. State officials have asked us to help determine the attitudes and behaviors of people regarding gaming and betting of all types. All answers will remain strictly anonymous and confidential and this interview will only take a short time. I promise I am not trying to sell anything.

S0. For this interview, we will need to speak with people between the ages of 21 and 59. Are there any residents living in your household that are at least 21 years old but not yet 60 years old?

- 1 Yes
- 2 No (**THANK AND TERMINATE**)
- 3 No Answer/Refuse (**THANK AND TERMINATE**)

S1. How many people in your household are between the ages of 21 and 60? _____

[RECORD ACTUAL NUMBER.]

S2. What is your age?

- 1 Record Age: _____
- 2 Don't know (**THANK AND TERMINATE**)
- 3 Refuse (**THANK AND TERMINATE**)

S3. [INTERVIEWER--ENTER RESPONDENT'S GENDER.]

[IF UNSURE:] I'm sorry, but I have to ask this: Are you male or female?

1. Male
2. Female

Q1. I am going to ask you about some recreational activities you may take part in during the past 12 months. Let's begin with social activities. How often have you participated in organized social events in the past 12 months? Would you say:

1. 50 or more times (weekly)
2. 12 to 50 times (monthly)
3. 1 to 11 times (less than monthly)
4. Or not at all in the past 12 months?
5. DK
6. REF

Q2. How often did you attend concerts in the past 12 months? Would you say:

1. 50 or more times (weekly)
2. 12 to 50 times (monthly)
3. 1 to 11 times (less than monthly)
4. Or not at all in the past 12 months?
5. DK
6. REF

Q3. How often did you participate in gaming and betting money in the past 12 months?

Would you say:

1. 50 or more times (weekly)
2. 12 to 50 times (monthly)
3. 1 to 11 times (less than monthly)
4. Or not at all in the past 12 months?
5. DK
6. REF

Q4. Now I am going to ask you some questions related to gaming and betting money. By gaming and betting I mean situations where you risk losing money or other valuables in hopes of winning more than you spend. Please tell me whether you have ever participated in the following types of betting. Remember that all of your answers are anonymous and confidential.

Have you ever played cards for money?

- 1 Yes
- 2 No (**SKIP TO # 5**)
- 3 Don't Know (**SKIP TO # 5**)
- 4 No Answer/Refuse (**SKIP TO # 5**)

4a. When was the last time you played cards for money? Would you say you have played in the past month, the past six months, the past year, or you played more than one year ago?

- 1 Past month
- 2 Past six months
- 3 Past year
- 4 More than one year ago
- 5 Don't Know (**SKIP TO # 5**)
- 6 No Answer/Refuse (**SKIP TO #5**)

4b. At what age did you first play cards for money? _____

888=Don't Know 999=No Answer/Refuse

(IF PLAYED IN PAST 12 MONTHS):

4c. What is the most you have won playing cards in one day?

4d. What is the most you have lost in one day?

5. Have you ever paid to play bingo for cash prizes?

- 1 Yes
- 2 No (**SKIP TO # 6**)
- 3 Don't Know (**SKIP TO # 6**)
- 4 No Answer/Refuse (**SKIP TO # 6**)

5a. When was the last time you played bingo for money? Would you say you have played in the past month, the past six months, the past year, or you played more than one year ago?

- 1 Past month
- 2 Past six months
- 3 Past year
- 4 More than one year ago
- 5 Don't Know (**SKIP TO # 6**)
- 6 No Answer/Refuse (**SKIP TO # 6**)

5b. At what age did you first play bingo for money? _____
888=Don't Know 999=No Answer/Refuse

(IF PLAYED IN PAST 12 MONTHS):

5c. is the most you have won playing bingo in one day?

5d. is the most you have spent in one day?

6. Have you ever bet money on games of your own personal skill such as pool, golf, or bowling?

- 1 Yes
- 2 No (**SKIP TO # 7**)
- 3 Don't Know (**SKIP TO # 7**)
- 4 No Answer/Refuse (**SKIP TO # 7**)

[INTERVIEWER INSTRUCTIONS: Gaming of personal skill only includes skills of the respondents own ability (not betting on others).]

6a. When was the last time you bet money on games of your own personal skill? Would you say you have bet in the past month, the past six months, the past year, or you bet more than one year ago?

- 1 Past month
- 2 Past six months
- 3 Past year
- 4 More than one year ago
- 5 Don't Know (**SKIP TO # 7**)
- 6 No Answer/Refuse (**SKIP TO # 7**)

6b. At what age did you first bet money on games of personal skill? _____
888=Don't Know 999=No Answer/Refuse

(IF PLAYED IN PAST 12 MONTHS):

6c. What is the most you have won on games of personal skill in one day?

6d. What is the most you have lost in one day?

7. Have you ever bet money on sports teams?

- 1 Yes
- 2 No (**SKIP TO # 8**)
- 3 Don't Know (**SKIP TO # 8**)
- 4 No Answer/Refuse (**SKIP TO #8**)

7a. When was the last time you bet money on sports teams? Would you say you have bet in the past month, the past six months, the past year, or you bet more than one year ago?

- 1 Past month
- 2 Past six months
- 3 Past year
- 4 More than one year ago
- 5 Don't Know (**SKIP TO # 8**)
- 6 No Answer/Refuse (**SKIP TO # 8**)

7b. At what age did you first bet money on sports teams? _____
888=Don't Know 999=No Answer/Refuse

(IF PLAYED IN PAST 12 MONTHS):

7c. What is the most you have won betting money on sports teams in one day?

7d. What is the most you have lost in one day?

8. Have you ever bought scratch-offs or pull tabs that you purchased yourself?

- 1 Yes
- 2 No (**SKIP TO # 9**)
- 3 Don't Know (**SKIP TO # 9**)
- 4 No Answer/Refuse (**SKIP TO # 9**)

8a. When was the last time you bought scratch-offs or pull tabs? Would you say you have bought them in the past month, the past six months, the past year, or you bought them more than one year ago?

- 1 Past month
- 2 Past six months
- 3 Past year

- 4 More than one year ago
- 5 Don't Know (**SKIP TO # 9**)
- 6 No Answer/Refuse (**SKIP TO #9**)

8b. At what age did you buy your first scratch-off or pull tab? _____
888=Don't Know 999=No Answer/Refuse

(IF PLAYED IN PAST 12 MONTHS):

8c. What is the most you have won on scratch-offs or pull tabs in one day?

8d. What is the most you have spent on scratch-offs or pull tabs in one day?

9. Have you ever bought a lottery ticket?

- 1 Yes
- 2 No (**SKIP TO # 10**)
- 3 Don't Know (**SKIP TO # 10**)
- 4 No Answer/Refuse (**SKIP TO # 10**)

9a. When was the last time you bought lottery tickets? Would you say you have bought them in the past month, the past six months, the past year, or you bought them more than one year ago?

- 1 Past month
- 2 Past six months
- 3 Past year
- 4 More than one year ago
- 5 Don't Know (**SKIP TO # 10**)
- 6 No Answer/Refuse (**SKIP TO # 10**)

9b. At what age did you buy your first lottery ticket? _____
888=Don't Know 999=No Answer/Refuse

9c. Where do you usually buy these tickets? Is it usually at a:

- 1 convenience store,
- 2 gas station,
- 3 a grocery store, or
- 4 Somewhere else (**SPECIFY**) _____
- 5 DK
- 6 REF

(IF PLAYED IN PAST 12 MONTHS):

9d. What is the most you have won on lottery tickets in one day?

9e. What is the most you have spent on lottery tickets in one day?

10. Have you ever placed bets at a casino?

- 1 Yes
- 2 No (**SKIP TO # 11**)
- 3 Don't Know (**SKIP TO # 11**)
- 4 No Answer/Refuse (**SKIP TO # 11**)

10a. When was the last time you placed bets at a casino? Would you say you have placed bets in the past month, the past six months, the past year, or you placed bets more than one year ago?

- 1 Past month
- 2 Past six months
- 3 Past year
- 4 More than one year ago
- 5 Don't Know (**SKIP TO # 11**)
- 6 No Answer/Refuse (**SKIP TO # 11**)

10b. At what age did you first place a bet at a casino? _____

888=Don't Know 999=No Answer/Refuse

10c. Have you ever placed bets at a casino in Indiana?

- 1 Yes
- 2 No (**SKIP TO #10e**)
- 3 DK (**SKIP TO #10e**)
- 4 REF (**SKIP TO #10e**)

10d. Was that at a riverboat casino, one on land or have you placed bets at both types of Indiana casinos?

- 1 riverboat casino
- 2 land-based casino
- 3 both types
- 4 DK
- 5 REF

10e. Have you ever placed bets at a casino outside of Indiana?

- 1 Yes
- 2 No (**SKIP TO #10G**)
- 3 DK (**SKIP TO #10G**)
- 4 REF (**SKIP TO #10G**)

10f. Was that at a riverboat casino, one on land or have you placed bets at both types of casinos outside of Indiana?

- 1 riverboat casino
- 2 land-based casino
- 3 both types

- 4 DK
- 5 REF

(IF PLAYED AT A CASINO IN PAST 12 MONTHS):

10g. What is the most you have won at a casino in one day?

10h. What is the most you have lost at a casino in one day?

11. Have you ever bet on horses?

- 1 Yes
- 2 No (**SKIP TO # 12**)
- 3 Don't Know (**SKIP TO # 12**)
- 4 No Answer/Refuse (**SKIP TO # 12**)

11a. When was the last time you bet on horses? Would you say you have bet in the past month, the past six months, the past year, or you bet more than one year ago?

- 1 Past month
- 2 Past six months
- 3 Past year
- 4 More than one year ago
- 5 Don't Know (**SKIP TO # 12**)
- 6 No Answer/Refuse (**SKIP TO # 12**)

11b. At what age did you first bet on horses? _____

888=Don't Know 999=No Answer/Refuse

11c. (IF Q11a > 3 SKIP TO Q12) Where do you usually place these bets?

- 1 Off-track betting
- 2 At the horse track
- 3 Other (**SPECIFY**) _____
- 4 Don't Know
- 5 No Answer/Refuse

(IF PLAYED IN PAST 12 MONTHS):

11d. What is the most you have won betting on horses in one day?

11e. What is the most you have lost in one day?

12. Have you ever taken a trip for a day or more to a riverboat or a horse track where the travel was sponsored by an organization?

- 1 Yes
- 2 No (**SKIP TO # 13**)
- 3 Don't Know (**SKIP TO # 13**)
- 4 No Answer/Refuse (**SKIP TO # 13**)

12a. Was the trip sponsored by a senior citizen's center, a radio station, a casino, a horse track, or by some other organization?

- 1, Senior Citizen's Center
- 2, Radio Station
- 3, Casino
- 4, Horse Track
5. Some other sponsor (Specify_____)
6. Don't Know
7. Refuse

13. Have you ever played dice for money?

- 1 Yes
- 2 No (**SKIP TO # 14**)
- 3 Don't Know (**SKIP TO # 14**)
- 4 No Answer/Refuse (**SKIP TO # 14**)

13a. When was the last time you played dice for money? Would you say you have played in the past month, the past six months, the past year, or you played more than one year ago?

- 1 Past month
- 2 Past six months
- 3 Past year
- 4 More than one year ago
- 5 Don't Know (**SKIP TO # 14**)
- 6 No Answer/Refuse (**SKIP TO # 14**)

13a. At what age did you first play dice for money? _____
888=Don't Know 999=No Answer/Refuse

(IF PLAYED IN PAST 12 MONTHS):

13d. What is the most you have won playing dice in one day?

13e. What is the most you have lost in one day?

14. Have you ever used the internet to bet money?

- 1 Yes
- 2 No (**SKIP TO # 15**)
- 3 Don't Know (**SKIP TO # 15**)
- 4 No Answer/Refuse (**SKIP TO # 15**)

14a. When was the last time you bet money on the internet? Would you say you have played in the past month, the past six months, the past year, or you bet on the internet more than one year ago?

- 1 Past month
- 2 Past six months
- 3 Past year
- 4 More than one year ago
- 5 Don't Know **(SKIP TO # 15)**
- 6 No Answer/Refuse **(SKIP TO # 15)**

14b. What type of betting have you done on the internet?
(SELECT ALL MENTIONED)

- 1 Casino
- 2 Sports betting
- 3 Other **(SPECIFY)** _____
- 4 Don't Know
- 5 No Answer/Refuse

(IF BET USING THE INTERNET IN PAST 12 MONTHS):

14c. What is the most you have won on Internet gaming in one day?

14d. What is the most you have lost in one day?

15. Have you participated in any other forms of gaming or betting money?

- 1 Yes
- 2 No **(SKIP TO # 16)**
- 3 Don't Know **(SKIP TO # 16)**
- 4 No Answer/Refuse **(SKIP TO # 16)**

15a. What other types of gaming or betting money have you participated in?
(DO NOT READ LIST. SELECT ALL MENTIONED)

- 1 Flipped or pitched coins
- 2 Played video poker
- 3 Played slot or keno machines
- 4 P-shake
- 5 Numbers
- 6 Other **(SPECIFY)** _____
- 7 Don't Know
- 8 No Answer/Refuse

15b. When was the last time you played these games for money? Would you say you have played in the past month, the past six months, the past year, or you played more than one year ago?

- 1 Past month
- 2 Past six months
- 3 Past year
- 4 More than one year ago
- 5 Don't Know (**SKIP TO # 13**)
- 6 No Answer/Refuse (**SKIP TO # 13**)

15c. At what age did you first play these games? _____

888=Don't Know 999=No Answer/Refuse

16. Think about the different ages of people who gamble in Indiana. In your opinion, what age group do you feel is most at risk for developing a serious problem with gambling? Would you say...

1. People under 25,
2. People between 25 and 60 years old, or
3. People over 60 years old?
4. DK (SKIP NEXT QUESTION)
5. REF (SKIP NEXT QUESTION)

17. What do you think would be the most effective way to get information to this group about problems associated with gambling? Would you say...

1. Television
2. Radio
3. Newspaper
4. Or some other means? (SPECIFY _____)
5. DK
6. REF

18. If someone you knew had a gambling problem and asked you where to go for help, would you know who to call?

- 1 Yes (SPECIFY _____)
- 2 No
- 3 Don't Know
- 4 No Answer/Refuse

IF NO GAMBLING IN THE PAST YEAR, SKIP TO Q29

19. During the past 12 months, did you feel you needed to gamble more often or for more money than you had in the past in order to feel you had enough?

- 1 Yes
- 2 No
- 3 Don't Know
- 4 No Answer/Refuse

20. During the past 12 months, have you felt kind of blue or down when you cut down or stopped gambling?

- 1 Yes
- 2 No
- 3 Don't Know
- 4 No Answer/Refuse

21. During the past 12 months, did you try to set limits on how often you gambled or how much money you spent when you gambled?

- 1 Yes
- 2 No (SKIP TO Q22)
- 3 Don't Know (SKIP TO Q22)
- 4 No Answer/Refuse (SKIP TO Q22)

21a. Were you able to keep to the limits you set or did you end up gambling more than you intended to?

- 1 Yes - able to keep to the limits
- 2 No – not able to keep to the limits
- 3 Don't Know
- 4 No Answer/Refuse

22. During the past 12 months, did you want to or try to cut down or stop gambling?

- 1 Yes
- 2 No
- 3 Don't Know
- 4 No Answer/Refuse

23. During the past 12 months, was there a month or more when you spent a lot of your time saving up to gamble or making arrangements to pay off your gambling debts?

- 1 Yes
- 2 No
- 3 Don't Know
- 4 No Answer/Refuse

24. This question is about important activities such as working, going to school, taking care of children, doing fun things such as hobbies and sports, and spending time with friends and family.

During the past 12 months, did gambling cause you to give up or spend less time doing these types of important activities?

- 1 Yes
- 2 No (SKIP TO Q25)
- 3 Don't Know (SKIP TO Q25)
- 4 No Answer/Refuse (SKIP TO Q25)

24a. Did you continue to gamble even though it interfered with these activities?

- 1 Yes
- 2 No
- 3 Don't Know
- 4 No Answer/Refuse

25. During the past 12 months, did you have any problems with your emotions or nerves that were probably caused or made worse by your gambling?

- 1 Yes
- 2 No (SKIP TO Q26)
- 3 Don't Know (SKIP TO Q26)
- 4 No Answer/Refuse (SKIP TO Q26)

25a. Did you continue to gamble even though you thought it was causing you to have problems with your emotions or nerves?

- 1 Yes
- 2 No
- 3 Don't Know
- 4 No Answer/Refuse

26. Sometimes people who gamble have serious problems at home, work or school-such as neglecting their spouses or children, missing work or school, doing a poor job at work or school, losing a job or dropping out of school. During the past 12 months, did gambling cause you to have serious problems like this either at work, school or home?

- 1 Yes
- 2 No
- 3 Don't Know
- 4 No Answer/Refuse

27. During the past 12 months, did gambling cause you to do things that could have gotten you in trouble with the law?

- 1 Yes
- 2 No
- 3 Don't Know
- 4 No Answer/Refuse

28. During the past 12 months, did you have any problems with family or friends that were probably caused by your gambling?

- 1 Yes
- 2 No (SKIP TO Q29)
- 3 Don't Know (SKIP TO Q29)
- 4 No Answer/Refuse (SKIP TO Q29)

28a. Did you continue to gamble even though you thought it caused problems with family or friends?

- 1 Yes
- 2 No
- 3 Don't Know
- 4 No Answer/Refuse

29. Now I just have a few questions to make sure the people we speak with are representative of people in your area. How much school have you completed?

- 01 None
- 02 First through 8th grade
- 03 Some high school, but no diploma
- 04 High school graduate or GED
- 05 Some college, but no degree
- 06 Associate degree
- 07 College graduate
- 08 Advanced degree
- 09 DON'T KNOW
- 10 REFUSED

30. Are you currently working for pay?

- 1 Yes
- 2 No
- 3 DK
- 4 Refuse

31. What is your marital status?

- 1 Single, never married
- 2 Single, living with partner
- 3 Married
- 4 Divorced
- 5 Widowed
- 6 No Answer/Refuse

32. What is your racial or ethnic identity?

- 1 White/Caucasian
- 2 Black/African-American
- 3 Hispanic
- 4 Asian/Pacific Islander
- 5 Native American
- 6 Other
- 7 No Answer/Refuse

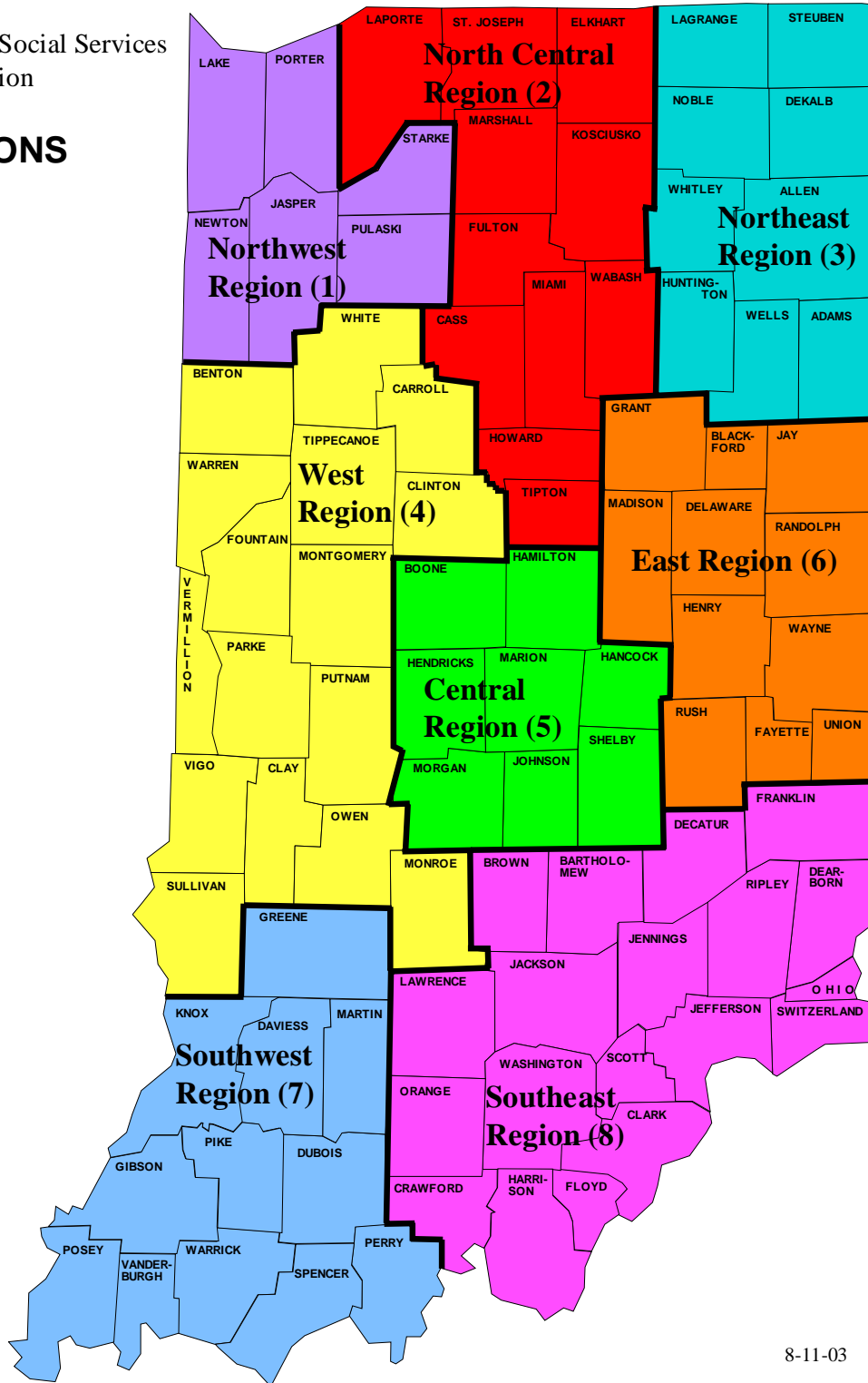
33. [STANDARD HOUSEHOLD INCOME QUESTION]

That was my last question; I would like to thank you for your time and cooperation.

Appendix B: DMHA Administrative Regions

Family and Social Services
Administration

REGIONS



8-11-03

Appendix C: Frequency Tables and Means

S3. Gender

		Frequency	Percent	Valid Percent	Cumulative Percent
Valid	1 Male	376	50.1	50.1	50.1
	2 Female	375	49.9	49.9	100.0
	Total	751	100.0	100.0	

S4. County

		Frequency	Percent	Valid Percent	Cumulative Percent
Valid	Adams	8	1.1	1.1	1.1
	Allen	42	5.6	5.6	6.7
	Bartholomew	7	1.0	1.0	7.6
	Benton	1	.1	.1	7.7
	Blackford	3	.4	.4	8.1
	Boone	9	1.2	1.2	9.3
	Brown	1	.2	.2	9.5
	Carroll	1	.1	.1	9.6
	Cass	5	.7	.7	10.3
	Clark	12	1.7	1.7	11.9
	Clay	3	.4	.4	12.4
	Clinton	5	.6	.6	13.0
	Crawford	1	.2	.2	13.2
	Daviess	3	.4	.4	13.6
	Dearborn	7	1.0	1.0	14.6
	Decatur	1	.1	.1	14.7
	Dekalb	5	.7	.7	15.3
	Delaware	9	1.1	1.1	16.5
	Dubois	5	.6	.6	17.1
	Elkhart	18	2.4	2.4	19.5
	Fayette	4	.5	.5	20.0
	Floyd	5	.6	.6	20.7
	Fountain	2	.3	.3	20.9
	Franklin	4	.5	.5	21.5
	Fulton	4	.5	.5	21.9
	Gibson	3	.4	.4	22.4
	Grant	4	.6	.6	22.9
	Greene	4	.5	.5	23.4
	Hamilton	35	4.6	4.6	28.1
	Hancock	8	1.0	1.0	29.1
	Harrison	5	.7	.7	29.8

Hendricks	18	2.4	2.4	32.1
Henry	3	.4	.4	32.5
Howard	13	1.8	1.8	34.3
Huntington	6	.8	.8	35.0
Jackson	5	.6	.6	35.6
Jasper	3	.4	.4	36.0
Jay	1	.1	.1	36.1
Jefferson	4	.5	.5	36.6
Jennings	3	.4	.4	37.1
Johnson	22	2.9	2.9	39.9
Knox	3	.4	.4	40.3
Kosciusko	15	2.0	2.0	42.4
Lagrange	3	.4	.4	42.7
Lake	37	5.0	5.0	47.7
Laporte	9	1.2	1.2	48.9
Lawrence	6	.7	.7	49.6
Madison	10	1.3	1.3	50.9
Marion	116	15.5	15.5	66.4
Marshall	4	.6	.6	67.0
Miami	8	1.1	1.1	68.1
Monroe	21	2.8	2.8	70.9
Montgomery	7	.9	.9	71.8
Morgan	7	.9	.9	72.7
Newton	1	.2	.2	72.9
Noble	5	.7	.7	73.5
Ohio	1	.1	.1	73.7
Owen	3	.4	.4	74.1
Parke	2	.3	.3	74.4
Perry	3	.4	.4	74.8
Pike	1	.2	.2	74.9
Porter	22	2.9	2.9	77.8
Posey	2	.3	.3	78.1
Pulaski	4	.5	.5	78.6
Putnam	4	.6	.6	79.2
Randolph	4	.5	.5	79.7
Ripley	5	.7	.7	80.4
Rush	4	.5	.5	80.9
St. Joseph	38	5.0	5.0	86.0
Scott	1	.1	.1	86.1
Shelby	2	.3	.3	86.4
Starke	2	.3	.3	86.6
Steuben	5	.7	.7	87.3
Sullivan	2	.3	.3	87.6
Switzerland	1	.2	.2	87.8
Tippecanoe	5	.7	.7	88.5

Tipton	2	.3	.3	88.8
Union	1	.2	.2	88.9
Vanderburgh	20	2.6	2.6	91.5
Vermillion	3	.5	.5	92.0
Vigo	21	2.8	2.8	94.8
Wabash	7	.9	.9	95.7
Warren	2	.3	.3	96.0
Warrick	7	1.0	1.0	96.9
Washington	4	.5	.5	97.5
Wayne	8	1.1	1.1	98.6
Wells	6	.8	.8	99.4
White	2	.2	.2	99.7
Whitley	2	.3	.3	100.0
Total	751	100.0	100.0	

Q1. Organized Social Events

		Frequency	Percent	Valid Percent	Cumulative Percent
Valid	1 50 or more times (weekly)	129	17.2	17.2	17.2
	2 12 to 50 times (monthly)	206	27.5	27.5	44.7
	3 1 to 11 times (less than monthly)	281	37.4	37.4	82.1
	4 Or not at all in the past 12 months?	127	17.0	17.0	99.1
	5 DK	7	.9	.9	100.0
	Total	751	100.0	100.0	

Q2. Attend concerts

		Frequency	Percent	Valid Percent	Cumulative Percent
Valid	1 50 or more times (weekly)	3	.4	.4	.4
	2 12 to 50 times (monthly)	27	3.6	3.6	4.0
	3 1 to 11 times (less than monthly)	345	45.9	45.9	49.9
	4 Or not at all in the past 12 months?	376	50.1	50.1	100.0
	Total	751	100.0	100.0	

Q3. Gaming or betting money

		Frequency	Percent	Valid Percent	Cumulative Percent
Valid	1 50 or more times (weekly)	41	5.4	5.4	5.4
	2 12 to 50 times (monthly)	64	8.5	8.5	13.9
	3 1 to 11 times (less than monthly)	229	30.5	30.5	44.5
	4 Or not at all in the past 12 months?	417	55.5	55.5	100.0
	Total	751	100.0	100.0	

Q4. Ever played cards for money?

		Frequency	Percent	Valid Percent	Cumulative Percent
Valid	1 Yes	314	41.8	41.8	41.8
	2 No	436	58.1	58.1	99.9
	3 Don't Know	1	.1	.1	100.0
	Total	751	100.0	100.0	

Q4a. Last played cards for money?

		Frequency	Percent	Valid Percent	Cumulative Percent
Valid	1 Past month	53	7.0	16.8	16.8
	2 Past six months	65	8.6	20.6	37.4
	3 Past year	35	4.7	11.1	48.5
	4 More than one year ago	162	21.5	51.5	100.0
	Total	314	41.8	100.0	
Missing	System	437	58.2		
Total		751	100.0		

Q5. Ever played bingo for cash prizes?

		Frequency	Percent	Valid Percent	Cumulative Percent
Valid	1 Yes	215	28.7	28.7	28.7
	2 No	533	70.9	70.9	99.6
	3 Don't Know	3	.4	.4	100.0
	Total	751	100.0	100.0	

Q5a. Last played bingo for cash prizes

		Frequency	Percent	Valid Percent	Cumulative Percent
Valid	1 Past month	14	1.9	6.7	6.7
	2 Past six months	22	3.0	10.3	17.1
	3 Past year	23	3.1	10.8	27.8
	4 More than one year ago	154	20.5	71.5	99.4
	5 Don't Know	1	.2	.6	100.0
	Total	215	28.7	100.0	
Missing	System	536	71.3		
Total		751	100.0		

Q6. Ever bet on games of personal skill?

		Frequency	Percent	Valid Percent	Cumulative Percent
Valid	1 Yes	182	24.2	24.2	24.2
	2 No	568	75.6	75.6	99.9
	3 Don't Know	1	.1	.1	100.0
	Total	751	100.0	100.0	

Q6a. Last bet on games of personal skill

		Frequency	Percent	Valid Percent	Cumulative Percent
Valid	1 Past month	33	4.4	18.0	18.0
	2 Past six months	41	5.4	22.4	40.5
	3 Past year	22	2.9	11.8	52.3
	4 More than one year ago	87	11.6	47.7	100.0
	Total	182	24.2	100.0	
Missing	System	569	75.8		
Total		751	100.0		

Q7. Ever bet on sports teams?

		Frequency	Percent	Valid Percent	Cumulative Percent
Valid	1 Yes	200	26.7	26.7	26.7
	2 No	551	73.3	73.3	100.0
	Total	751	100.0	100.0	

Q7a. Last bet on sports teams?

		Frequency	Percent	Valid Percent	Cumulative Percent
Valid	1 Past month	23	3.0	11.4	11.4
	2 Past six months	69	9.3	34.7	46.1
	3 Past year	30	4.0	15.0	61.1
	4 More than one year ago	77	10.2	38.2	99.3
	5 Don't Know	1	.2	.7	100.0
	Total	200	26.7	100.0	
Missing	System	551	73.3		
Total		751	100.0		

Q8. Ever bought scratch-offs/pull tabs?

		Frequency	Percent	Valid Percent	Cumulative Percent
Valid	1 Yes	482	64.2	64.2	64.2
	2 No	269	35.8	35.8	100.0
	Total	751	100.0	100.0	

Q8a. Last bought scratch-offs/pull tabs

		Frequency	Percent	Valid Percent	Cumulative Percent
Valid	1 Past month	162	21.5	33.6	33.6
	2 Past six months	122	16.3	25.4	58.9
	3 Past year	40	5.3	8.2	67.2
	4 More than one year ago	157	20.9	32.5	99.7
	5 Don't Know	1	.2	.3	100.0
	Total	482	64.2	100.0	
Missing	System	269	35.8		
Total		751	100.0		

Q9. Ever bought a lottery ticket?

		Frequency	Percent	Valid Percent	Cumulative Percent
Valid	1 Yes	548	73.0	73.0	73.0
	2 No	201	26.7	26.7	99.7
	3 Don't Know	2	.3	.3	100.0
	Total	751	100.0	100.0	

Q9a. Last bought a lottery ticket?

		Frequency	Percent	Valid Percent	Cumulative Percent
Valid	1 Past month	209	27.9	38.2	38.2
	2 Past six months	126	16.8	23.1	61.2
	3 Past year	46	6.1	8.3	69.6
	4 More than one year ago	166	22.1	30.3	99.9
	5 Don't Know	1	.1	.1	100.0
	Total	548	73.0	100.0	
Missing	System	203	27.0		
Total		751	100.0		

Q9c. Place usually buy lottery tickets

		Frequency	Percent	Valid Percent	Cumulative Percent
Valid	1 Convenience Store	205	27.3	37.5	37.5
	2 Gas Station	275	36.7	50.3	87.8
	3 Grocery Store	37	5.0	6.8	94.6
	5 Don't know (DO NOT READ)	4	.5	.7	95.2
	Restaurant	1	.1	.1	95.4
	Liquor store	8	1.0	1.4	96.8
	Drug store	1	.1	.1	96.9
	Nonspecific/Everywhere	8	1.0	1.4	98.3
	Smoke shop	1	.2	.3	98.6
	Packing store	1	.1	.1	98.7
	Bookstore	1	.1	.2	98.9
	Outside US in retail stores	1	.2	.3	99.2
	Barbecue place	1	.1	.2	99.4
	Bar/Tavern	2	.3	.4	99.7
	The Lobby Shoppe at the National City Bank in Louisville	1	.2	.3	100.0
	Total	548	72.9	100.0	
	Missing	System	203	27.1	
Total		751	100.0		

Q10. Ever placed bets in casino

		Frequency	Percent	Valid Percent	Cumulative Percent
Valid	1 Yes	296	39.3	39.3	39.3
	2 No	454	60.5	60.5	99.8

3 Don't Know	1	.2	.2	100.0
Total	751	100.0	100.0	

Q10a. Last place bets in casino

		Frequency	Percent	Valid Percent	Cumulative Percent
Valid	1 Past month	20	2.7	6.9	6.9
	2 Past six months	67	9.0	22.8	29.8
	3 Past year	43	5.7	14.5	44.3
	4 More than one year ago	165	21.9	55.7	100.0
	Total	296	39.3	100.0	
Missing	System	455	60.7		
Total		751	100.0		

Q10c. Ever placed bets at an Indiana casino?

		Frequency	Percent	Valid Percent	Cumulative Percent
Valid	1 Yes	170	22.6	57.5	57.5
	2 No	126	16.7	42.5	100.0
	Total	296	39.3	100.0	
Missing	System	455	60.7		
Total		751	100.0		

Q10d. Riverboat, land-based, or both?

		Frequency	Percent	Valid Percent	Cumulative Percent
Valid	1 Riverboat casino	151	20.1	88.9	88.9
	2 Land-based casino	8	1.0	4.4	93.3
	3 Both types	10	1.3	6.0	99.3
	4 Don't know	1	.2	.7	100.0
	Total	170	22.6	100.0	
Missing	System	581	77.4		
Total		751	100.0		

Q10e. Ever placed bets in casino outside of Indiana?

		Frequency	Percent	Valid Percent	Cumulative Percent
Valid	1 Yes	245	32.7	83.0	83.0
	2 No	50	6.7	17.0	100.0
	Total	296	39.3	100.0	

Missing	System	455	60.7		
Total		751	100.0		

Q10f. Riverboat, land-based, or both?

		Frequency	Percent	Valid Percent	Cumulative Percent
Valid	1 Riverboat casino	27	3.6	10.9	10.9
	2 Land-based casino	169	22.5	69.0	79.9
	3 Both types	46	6.2	18.9	98.8
	4 Don't know	3	.4	1.2	100.0
	Total	245	32.7	100.0	
Missing	System	506	67.3		
Total		751	100.0		

Q11. Ever bet on horses

		Frequency	Percent	Valid Percent	Cumulative Percent
Valid	1 Yes	213	28.4	28.4	28.4
	2 No	538	71.6	71.6	100.0
	Total	751	100.0	100.0	

Q11a. Last bet on horses

		Frequency	Percent	Valid Percent	Cumulative Percent
Valid	1 Past month	18	2.4	8.4	8.4
	2 Past six months	22	2.9	10.4	18.7
	3 Past year	21	2.7	9.7	28.4
	4 More than one year ago	152	20.3	71.6	100.0
	Total	213	28.4	100.0	
Missing	System	538	71.6		
Total		751	100.0		

Q11c. Where bet on horses?

		Frequency	Percent	Valid Percent	Cumulative Percent
Valid	1 Off-track betting	17	2.3	28.5	28.5
	2 At the horse track	37	4.9	61.2	89.8
	PBG internet	1	.1	1.8	91.6
	Office pools	1	.2	2.1	93.7
	Pool at home	1	.1	1.1	94.8

	Private betting	1	.2	2.3	97.1
	Betting pool	1	.1	1.2	98.3
	Both off-track betting and at horse track	1	.1	1.7	100.0
	Total	61	8.1	100.0	
Missing	System	690	91.9		
Total		751	100.0		

Q12. Ever taken sponsored trip to riverboat/horse track

	Frequency	Percent	Valid Percent	Cumulative Percent
Valid 1 Yes	46	6.2	6.2	6.2
2 No	705	93.8	93.8	100.0
Total	751	100.0	100.0	

Q12a. Who was sponsor - 1st response

	Frequency	Percent	Valid Percent	Cumulative Percent
Valid 1 Senior Citizen's Center	3	.4	6.7	6.7
3 Casino	5	.7	11.8	18.4
4 Horse Track	1	.2	3.1	21.5
6 Don't Know	6	.7	12.1	33.6
7 Refuse	1	.1	1.4	35.0
Work/Employer	11	1.5	23.6	58.6
Social club	3	.4	5.9	64.5
Sorority	1	.2	2.9	67.4
Friends	2	.3	4.6	71.9
Veterans organization	1	.1	1.4	73.4
Moose club	1	.1	1.6	75.0
Mortgage company	1	.1	2.3	77.3
American Legion	1	.1	1.6	78.9
Indiana District Precision Metal Forming Association	1	.1	2.2	81.1
Alliance of Indiana Rural Water	1	.1	2.2	83.3
Delta club	1	.1	2.3	85.6
Bowling team	1	.2	3.1	88.7
Gambling club	1	.1	2.3	91.1
Elks club	1	.1	2.2	93.3
Masonic society	1	.1	2.3	95.6
Union	1	.1	2.2	97.8

	School	1	.1	2.2	100.0
	Total	46	6.2	100.0	
Missing	System	705	93.8		
Total		751	100.0		

Q12a. Who was sponsor - 2nd response

		Frequency	Percent	Valid Percent	Cumulative Percent
Valid	6 Don't Know	1	.1	31.7	31.7
	Indiana Thoroughbred Association	1	.2	68.3	100.0
	Total	2	.3	100.0	
Missing	System	749	99.7		
Total		751	100.0		

Q13. Ever played dice for money

		Frequency	Percent	Valid Percent	Cumulative Percent
Valid	1 Yes	84	11.2	11.2	11.2
	2 No	663	88.2	88.2	99.4
	3 Don't Know	4	.6	.6	100.0
	Total	751	100.0	100.0	

Q13a. Last played dice for money

		Frequency	Percent	Valid Percent	Cumulative Percent
Valid	1 Past month	12	1.6	14.0	14.0
	2 Past six months	9	1.3	11.3	25.3
	3 Past year	8	1.1	9.8	35.1
	4 More than one year ago	55	7.3	64.9	100.0
	Total	84	11.2	100.0	
Missing	System	667	88.8		
Total		751	100.0		

Q14. Ever used internet to bet?

		Frequency	Percent	Valid Percent	Cumulative Percent
Valid	1 Yes	21	2.8	2.8	2.8
	2 No	730	97.2	97.2	100.0
	Total	751	100.0	100.0	

Q14a. Last bet online

		Frequency	Percent	Valid Percent	Cumulative Percent
Valid	1 Past month	6	.9	30.7	30.7
	2 Past six months	5	.7	24.0	54.8
	3 Past year	3	.4	15.0	69.8
	4 More than one year ago	6	.8	30.2	100.0
	Total	21	2.8	100.0	
Missing	System	730	97.2		
Total		751	100.0		

Q14b. Type of online betting - 1st response

		Frequency	Percent	Valid Percent	Cumulative Percent
Valid	1 Casino	6	.8	27.4	27.4
	2 Sports betting	8	1.1	40.6	67.9
	Poker	5	.7	23.7	91.6
	Horse racing	2	.2	8.4	100.0
	Total	21	2.8	100.0	
Missing	System	730	97.2		
Total		751	100.0		

Q14b. Type of online betting - 2nd response

		Frequency	Percent	Valid Percent	Cumulative Percent
Valid	1 Casino	1	.2	49.6	49.6
	2 Sports betting	1	.2	50.4	100.0
	Total	3	.4	100.0	
Missing	System	748	99.6		
Total		751	100.0		

Q15. Ever participate in other forms of gaming

		Frequency	Percent	Valid Percent	Cumulative Percent
Valid	1 Yes	71	9.4	9.4	9.4
	2 No	680	90.5	90.5	99.9
	3 Don't Know	1	.1	.1	100.0
	Total	751	100.0	100.0	

Q15a. Types of gaming/betting - 1st response

		Frequency	Percent	Valid Percent	Cumulative Percent
Valid	2 Played video poker	1	.2	2.0	2.0
	3 Played slot or keno machines	44	5.9	62.9	64.9
	6 Other (SPECIFY)	24	3.2	33.7	98.6
	8 No Answer/Refuse	1	.1	1.4	100.0
	Total	71	9.4	100.0	
Missing	System	680	90.6		
Total		751	100.0		

Other codes for 1st response

		Frequency	Percent	Valid Percent	Cumulative Percent
Valid	Casino games	2	.3	9.9	9.9
	Dog racing	7	1.0	30.9	40.7
	Overseas gaming	1	.1	4.3	45.0
	The Cherry Master	1	.1	3.1	48.1
	Office pools	6	.8	26.7	74.8
	Slot machines	1	.1	3.1	77.9
	Pull tabs in bars	1	.1	3.1	81.0
	Bets with a bookie	1	.1	2.8	83.8
	Monte Carlo nights	1	.1	4.3	88.1
	Jai-Lai	1	.1	3.1	91.1
	Massive Multiplayer Online Gaming (MMO)	1	.1	4.6	95.7
	Match coins	1	.1	4.3	100.0
	Total	24	3.2	100.0	
Missing	System	727	96.8		
Total		751	100.0		

Q15a. Types of gaming/betting - 2nd response

		Frequency	Percent	Valid Percent	Cumulative Percent
Valid	6 Other (SPECIFY)	2	.3	100.0	100.0
Missing	System	749	99.7		
Total		751	100.0		

Other codes for 2nd response

		Frequency	Percent	Valid Percent	Cumulative Percent
Valid	Casino games	2	.3	100.0	100.0
Missing	System	749	99.7		
Total		751	100.0		

Q15b. Last time played games

		Frequency	Percent	Valid Percent	Cumulative Percent
Valid	1 Past month	15	2.0	20.8	20.8
	2 Past six months	13	1.7	17.8	38.6
	3 Past year	8	1.1	11.2	49.9
	4 More than one year ago	35	4.7	50.1	100.0
	Total	71	9.4	100.0	
Missing	System	680	90.6		
Total		751	100.0		

Q16. Age group most at risk

		Frequency	Percent	Valid Percent	Cumulative Percent
Valid	1 People under 25,	258	34.3	34.3	34.3
	2 People between 25 and 60 years old, or	364	48.5	48.5	82.8
	3 People over 60 years old?	82	10.9	10.9	93.7
	4 Don't know (DO NOT READ)	44	5.9	5.9	99.6
	5 Refuse (DO NOT READ)	3	.4	.4	100.0
Total	751	100.0	100.0		

Q17. Most effective way to reach most at-risk group

		Frequency	Percent	Valid Percent	Cumulative Percent
Valid	1 Television	412	54.9	58.6	58.6
	2 Radio	62	8.3	8.8	67.4
	3 Newspaper	35	4.7	5.0	72.4
	4 Or some other means?	3	.4	.4	72.8

(SPECIFY)					
	5 Don't know (DO NOT READ)	51	6.8	7.3	80.1
	6 Refuse (DO NOT READ)	12	1.6	1.8	81.8
	Internet	14	1.9	2.0	83.9
	All of the above	36	4.7	5.1	88.9
	Family/Friends/S ocial groups	13	1.7	1.9	90.8
	Billboards	10	1.4	1.4	92.3
	Direct mail	5	.6	.7	92.9
	Brochures/Flyers	3	.4	.4	93.3
	Workshops	2	.3	.3	93.6
	Distribute information at nursing homes	1	.1	.2	93.8
	Through schools	15	1.9	2.1	95.9
	Advertisements in casinos	17	2.2	2.4	98.3
	Magazines	2	.3	.3	98.6
	AARP	3	.4	.4	99.0
	Counseling	1	.1	.2	99.1
	Awareness groups	1	.1	.1	99.3
	Church	1	.2	.2	99.5
	Employer/Workp lace	1	.2	.2	99.7
	Benefit concert	1	.2	.2	99.9
	Gambler's Anonymous	1	.1	.1	100.0
	Total	704	93.7	100.0	
Missing	System	47	6.3		
Total		751	100.0		

Q18. Know who to call for problem

		Frequency	Percent	Valid Percent	Cumulative Percent
Valid	1 Yes	290	38.6	38.6	38.6
	2 No	452	60.2	60.2	98.7
	3 Don't Know	10	1.3	1.3	100.0
	Total	751	100.0	100.0	

18_YES. Call recommendation 1

		Frequency	Percent	Valid Percent	Cumulative Percent
Valid	Hotline	62	8.3	21.4	21.4
	Friends/Family	6	.7	1.9	23.4
	Minister/Clergy	18	2.4	6.3	29.7
	Gamber's Anonymous	143	19.1	49.4	79.1
	County health services	1	.1	.4	79.5
	Counselors/Doctor /Medical	18	2.4	6.3	85.8
	Professional Addiction programs/facilities	18	2.4	6.2	92.0
	Hoosier Lottery	5	.7	1.9	93.9
	Casinos	1	.2	.5	94.4
	Indiana Gaming Commission	2	.3	.8	95.2
	Look in phone book	5	.7	1.7	96.9
	Focus on the Family	1	.1	.2	97.2
	Look up on internet	3	.4	1.1	98.3
	Resources at work	1	.2	.5	98.8
	Information Referral Services of Indiana	1	.1	.4	99.1
	Alcoholics Anonymous Bank	1	.1	.4	99.5
		1	.2	.5	100.0
	Total	290	38.6	100.0	
	Missing	System	461	61.4	
Total		751	100.0		

18_YES. Call recommendation 2

		Frequency	Percent	Valid Percent	Cumulative Percent
Valid	Hotline	4	.5	14.8	14.8
	Minister/Clergy	4	.6	17.6	32.4
	Gamber's Anonymous	3	.4	13.0	45.4
	Counselors/Doctor /Medical	5	.7	22.8	68.2
	Professional Addiction programs/facilities	4	.5	16.0	84.2
	Hoosier Lottery	1	.2	6.0	90.2
	Chamber of Commerce	1	.2	5.3	95.5

	Indiana Gaming Commission	1	.1	4.5	100.0
	Total	24	3.2	100.0	
Missing	System	727	96.8		
Total		751	100.0		

18_YES. Call recommendation 3

		Frequency	Percent	Valid Percent	Cumulative Percent
Valid	Minister/Clergy	1	.1	21.1	21.1
	Gamber's Anonymous Counselors/Doctor /Medical Professional	2	.3	59.9	81.0
	Total	1	.1	19.0	100.0
	Total	3	.5	100.0	
Missing	System	748	99.5		
Total		751	100.0		

Q19. Gamble more often to feel had enough

		Frequency	Percent	Valid Percent	Cumulative Percent
Valid	1 Yes	7	1.0	1.4	1.4
	2 No	499	66.4	98.6	100.0
	Total	506	67.4	100.0	
Missing	System	245	32.6		
Total		751	100.0		

Q20. Felt blue/down when cut back/stopped gaming

		Frequency	Percent	Valid Percent	Cumulative Percent
Valid	1 Yes	10	1.3	2.0	2.0
	2 No	492	65.5	97.3	99.2
	3 Don't Know	4	.5	.8	100.0
	Total	506	67.4	100.0	
Missing	System	245	32.6		
Total		751	100.0		

Q21. Set limits

		Frequency	Percent	Valid Percent	Cumulative Percent
Valid	1 Yes	142	18.8	28.0	28.0
	2 No	362	48.2	71.6	99.5

	3 Don't Know	1	.1	.2	99.8
	4 No Answer/Refuse	1	.2	.2	100.0
	Total	506	67.4	100.0	
Missing	System	245	32.6		
Total		751	100.0		

Q21a. Able to keep to limits

		Frequency	Percent	Valid Percent	Cumulative Percent
Valid	1 Yes (ABLE to keep to the limits)	135	18.0	95.6	95.6
	2 No (NOT ABLE to keep to the limits)	6	.8	4.4	100.0
	Total	142	18.8	100.0	
Missing	System	609	81.2		
Total		751	100.0		

Q22. Want to try to cut back/stop

		Frequency	Percent	Valid Percent	Cumulative Percent
Valid	1 Yes	25	3.3	4.9	4.9
	2 No	478	63.6	94.5	99.4
	3 Don't Know	2	.3	.5	99.9
	4 No Answer/Refuse	1	.1	.1	100.0
	Total	506	67.4	100.0	
Missing	System	245	32.6		
Total		751	100.0		

Q23. Saving up to gamble

		Frequency	Percent	Valid Percent	Cumulative Percent
Valid	1 Yes	3	.4	.6	.6
	2 No	501	66.8	99.1	99.7
	3 Don't Know	1	.1	.1	99.9
	4 No Answer/Refuse	1	.1	.1	100.0
	Total	506	67.4	100.0	
Missing	System	245	32.6		
Total		751	100.0		

Q24. Gaming cause you to stop important activities

		Frequency	Percent	Valid Percent	Cumulative Percent
Valid	2 No	506	67.4	100.0	100.0
Missing	System	245	32.6		
Total		751	100.0		

Q24a. Continue to gamble anyway

		Frequency	Percent
Missing	System	751	100.0

Q25. Emotional/Nervous problems

		Frequency	Percent	Valid Percent	Cumulative Percent
Valid	1 Yes	1	.2	.3	.3
	2 No	504	67.2	99.7	100.0
	Total	506	67.4	100.0	
Missing	System	245	32.6		
Total		751	100.0		

Q25a. Continue to gamble anyway

		Frequency	Percent	Valid Percent	Cumulative Percent
Valid	1 Yes	1	.1	50.0	50.0
	2 No	1	.1	50.0	100.0
	Total	1	.2	100.0	
Missing	System	750	99.8		
Total		751	100.0		

Q26. Gambling cause serious problems at work/school/home

		Frequency	Percent	Valid Percent	Cumulative Percent
Valid	1 Yes	1	.1	.2	.2
	2 No	505	67.2	99.8	100.0
	Total	506	67.4	100.0	
Missing	System	245	32.6		
Total		751	100.0		

Q27. Gambling cause you to get in trouble with law

		Frequency	Percent	Valid Percent	Cumulative Percent
Valid	1 Yes	5	.7	1.0	1.0
	2 No	501	66.7	99.0	100.0
	Total	506	67.4	100.0	
Missing	System	245	32.6		
Total		751	100.0		

Q28. Gambling cause problems with family/friends

		Frequency	Percent	Valid Percent	Cumulative Percent
Valid	1 Yes	1	.2	.3	.3
	2 No	504	67.2	99.7	100.0
	Total	506	67.4	100.0	
Missing	System	245	32.6		
Total		751	100.0		

Q28a. Continue to gamble anyway

		Frequency	Percent	Valid Percent	Cumulative Percent
Valid	2 No	1	.2	100.0	100.0
Missing	System	750	99.8		
Total		751	100.0		

Q29. Educational attainment

		Frequency	Percent	Valid Percent	Cumulative Percent
Valid	02 First through 8th grade	7	.9	.9	.9
	03 Some high school, but no diploma	16	2.1	2.1	3.0
	04 High school graduate or GED	179	23.8	23.8	26.9
	05 Some college, but no degree	196	26.1	26.1	52.9
	06 Associate degree	71	9.5	9.5	62.4
	07 College graduate	197	26.3	26.3	88.7
	08 Advanced degree	85	11.3	11.3	100.0
	Total	751	100.0	100.0	

Q30. Employment status

		Frequency	Percent	Valid Percent	Cumulative Percent
Valid	1 Yes	621	82.7	82.7	82.7
	2 No	130	17.3	17.3	100.0
	Total	751	100.0	100.0	

Q31. Marital status

		Frequency	Percent	Valid Percent	Cumulative Percent
Valid	1 Single, never married	128	17.1	17.1	17.1
	2 Single, living with partner	20	2.7	2.7	19.8
	3 Married	489	65.1	65.1	84.9
	4 Divorced	98	13.1	13.1	97.9
	5 Widowed	15	2.0	2.0	99.9
	6 No Answer/Refuse	1	.1	.1	100.0
	Total	751	100.0	100.0	

Q32. Race/Ethnicity

		Frequency	Percent	Valid Percent	Cumulative Percent
Valid	1 White/Caucasian	669	89.1	89.1	89.1
	2 Black/African-American	45	5.9	5.9	95.1
	3 Hispanic	9	1.2	1.2	96.3
	4 Asian/Pacific Islander	7	.9	.9	97.2
	5 Native American	4	.5	.5	97.7
	6 Other	12	1.5	1.5	99.2
	7 No Answer/Refuse	6	.8	.8	100.0
	Total	751	100.0	100.0	

Q33. Income level

		Frequency	Percent	Valid Percent	Cumulative Percent
Valid	1 Less than \$20,000	71	9.4	9.4	9.4
	2 \$20,001 - \$40,000	140	18.6	18.6	28.0
	3 \$40,001 - \$60,000	165	21.9	21.9	49.9

4 \$60,001 - \$80,000	117	15.6	15.6	65.5
5 \$80,001 - \$100,000	73	9.7	9.7	75.2
6 More than \$100,000	92	12.3	12.3	87.5
7 Don't Know (DO NOT READ)	24	3.1	3.1	90.6
8 No Answer/Refuse (DO NOT READ)	71	9.4	9.4	100.0
Total	751	100.0	100.0	

Report A

S3. Gender		S2. Age	Q4b. Age when 1st played cards for money	Q4c. Most won in 1 day playing cards	Q4d. Most lost in 1 day playing cards	Q5b. Age 1st played bingo for cash prizes	Q5c. Most won playing bingo in 1 day
1 Male	Mean	39.90	18.88	480.79	236.65	24.47	362.56
	N	376	200	101	102	78	12
	Std. Deviation	10.612	6.038	721.335	426.474	8.450	615.383
	Median	40.00	18.00	150.00	66.10	24.56	101.56
2 Female	Mean	40.21	20.02	181.40	190.72	24.69	258.41
	N	375	98	41	43	116	43
	Std. Deviation	10.785	6.958	422.386	852.061	17.118	648.699
	Median	41.00	20.00	20.87	20.00	21.00	50.00
Total	Mean	40.05	19.25	394.61	223.13	24.60	281.70
	N	751	298	142	145	195	56
	Std. Deviation	10.693	6.367	662.146	581.922	14.257	637.341
	Median	40.47	18.00	100.00	50.00	22.00	50.00

Report B

S3. Gender		Q5d. Most lost playing bingo in 1 day	Q6b. Age when 1st bet on games of personal skill	Q6c. Most won in 1 day on games of personal skill	Q6d. Most lost in 1 day on games of personal skill	Q7b. Age when 1st bet on sports teams?	Q7c. Most won in 1 day on games of personal skill
1 Male	Mean	73.60	19.04	331.61	70.07	21.31	22
	N	14	141	77	78	129	66
	Std. Deviation	84.952	6.124	1193.326	107.861	7.242	66
	Median	30.00	18.00	50.00	20.00	20.00	10
2 Female	Mean	33.38	19.70	563.14	240.32	26.45	23
	N	46	27	17	17	54	59
	Std. Deviation	32.004	5.443	1346.550	537.248	8.835	59
	Median	24.18	20.00	63.68	20.00	25.00	8
Total	Mean	42.46	19.14	374.28	101.11	22.83	23
	N	60	168	94	95	183	

Std. Deviation	51.086	6.010	1218.686	252.934	8.072	64
Median	29.49	18.00	50.00	20.00	21.00	10

Report C

S3. Gender		Q7d. Most lost in 1 day betting on sports teams?	Q8b. Age when 1st bought scratch-off/pull tab?	Q8c. Most won on scratch-off/pull tabs in 1 day	Q8d. Most spent on scratch-off/pull tabs in 1 day	Q9b. Age when bought 1st lottery ticket	Q9d. Most won on lottery tickets in 1 day
1 Male	Mean	98.73	24.99	189.55	18.95	26.86	116.74
	N	86	203	161	159	238	201
	Std. Deviation	256.673	8.444	1239.250	55.717	8.851	453.585
	Median	20.00	21.82	30.00	5.00	25.00	7.42
2 Female	Mean	2022.86	28.01	98.46	10.65	28.88	109.50
	N	33	208	161	161	214	176
	Std. Deviation	13375.611	20.662	217.583	18.041	10.134	584.941
	Median	10.00	25.00	25.00	5.00	25.00	5.00
Total	Mean	630.24	26.52	143.95	14.78	27.82	113.36
	N	118	411	322	321	452	378
	Std. Deviation	7007.921	15.911	888.936	41.473	9.523	518.389
	Median	20.00	23.00	28.36	5.00	25.00	5.00

Report D

S3. Gender		Q9e. Most spent on lottery tickets in 1 day	Q10b. Age when placed 1st bet in casino	Q10g. Most won at casino in 1 day	Q10h. Most lost at casino in 1 day	Q11b. Age when 1st bet on horses	Q11d. Most won on horses in 1 day
1 Male	Mean	8.33	27.57	1539.09	442.81	28.63	598.3
	N	204	159	83	82	121	3
	Std. Deviation	11.844	7.838	5797.765	1725.528	19.212	1756.0
	Median	5.00	26.00	500.00	150.00	25.63	81.5
2 Female	Mean	6.22	31.90	973.63	153.57	27.07	307.1
	N	176	128	47	48	87	2
	Std. Deviation	20.135	23.063	3246.832	344.771	9.912	711.5
	Median	5.00	28.00	100.00	50.00	25.00	58.1
Total	Mean	7.35	29.50	1334.76	336.43	27.98	490.1
	N	379	287	130	130	208	5
	Std. Deviation	16.230	16.576	5020.483	1391.617	15.967	1456.4
	Median	5.00	26.00	243.27	100.00	25.00	71.1

Report E

S3. Gender		Q11e. Most lost on horses in 1 day	Q13b. Age when 1st played dice for money	Q13c. Most won in 1 day from playing dice	Q13d. Most lost in 1 day from playing dice	Q14c. Most won on online betting in 1 day	Q14d. Most lost on online betting in 1 day	Q14e. Most won on online betting in 1 day
1 Male	Mean	171.75	23.16	9427.08	664.30	238.29	91.09	
	N	37	58	21	21	12	12	
	Std. Deviation	383.095	9.324	34031.647	2239.732	571.210	136.971	
	Median	43.66	21.00	300.00	119.29	72.80	40.00	
2 Female	Mean	42.55	25.29	971.58	216.19	.00	20.00	
	N	23	25	7	7	1	1	
	Std. Deviation	47.721	11.644	1964.078	408.889	.000	.000	
	Median	22.85	21.00	30.01	20.00	.00	20.00	
Total	Mean	122.75	23.80	7205.20	554.39	225.28	87.21	
	N	60	83	29	28	13	13	
	Std. Deviation	308.204	10.057	29291.973	1953.215	556.941	133.923	
	Median	40.00	21.00	289.00	100.00	60.00	40.00	

